

ALUMINUM CABLE TRAY

INSTRUMENTATION CHANNEL

548 Nicola Place
Port Coquitlam, BC V3B 0K4
Canada

Direct Tel: 604-942-0050
Main Tel: 604-540-0011
Toll Free: 1-888-222-2633

Email: sales@codeelectric.com
orderentry@codeelectric.com

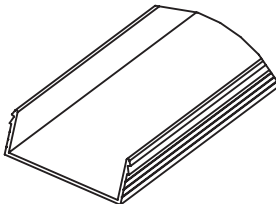
www.codeelectric.com

ALUMINUM - INSTRUMENTATION CHANNEL

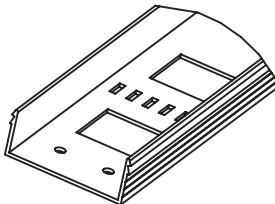
STRAIGHT LENGTH

Pg. 83

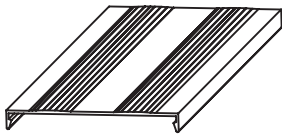
SOLID



PUNCHED



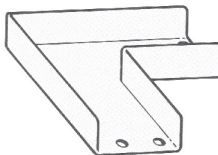
COVER



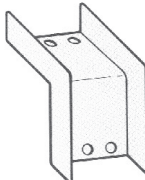
FITTINGS

Pg. 84-85

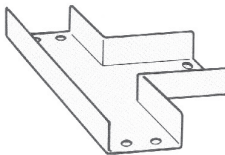
ELBOW



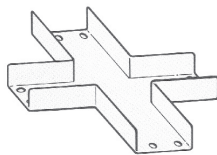
OUTSIDE/INSIDE
VERTICAL RISER



TEE



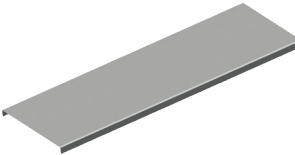
CROSS



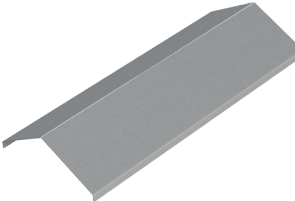
ACCESSORIES - COVERS

Pg. 213

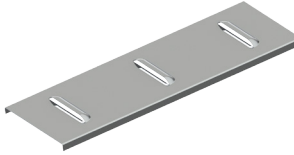
FLAT



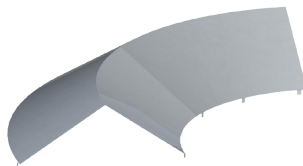
PEAKED



LOUVERED



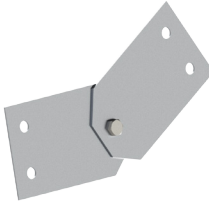
CUSTOM



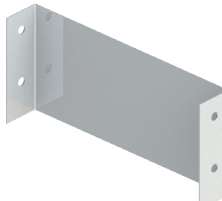
ACCESSORIES - HARDWARE

Pg. 214-222

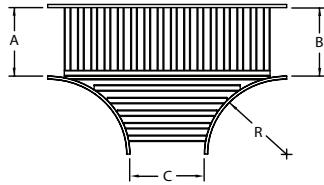
ADJUSTABLE RISER



END PLATES



CUSTOM FITTINGS



ALUMINUM - INSTRUMENTATION CHANNEL

Instrumentation Channel is a one-piece channel section, typically used to carry instrumentation, control, data communication, computer and telephone cable. The channel section is either punched or solid bottom based on the industry requirement.

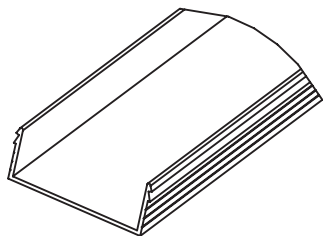
HOW TO ORDER - EXAMPLE:		AICP100	
Material	Channel	Width (W)	
		mm	in
A	IC	100	(4")
	ICP	150	(6")
	ICC		

Height (H)	
mm	in
30	(1")
65	(2 1/2")

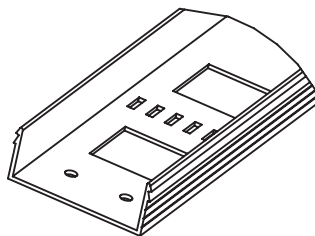
*Imperial measurements are for reference only
*Length is 3 meters

CHANNEL

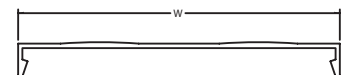
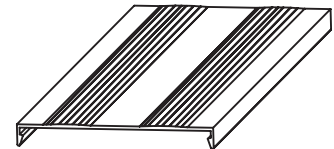
Solid Instrumentation Channel
(IC)



Punched Instrumentation Channel
(ICP)

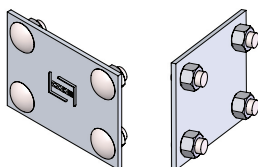


Instrumentation Channel Cover
(ICC)



SPYDERLOK

The original quick connector included with all fittings and tray.



ALUMINUM - INSTRUMENTATION CHANNEL - FITTING

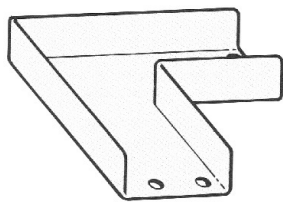
For changes in vertical and horizontal directions use fixed or adjustable fittings.

HOW TO ORDER - EXAMPLE:			AIC100-H90		
Material	Channel	Width (W)		Fitting Type	Degree
		mm	in		
A	IC or ICC	100	(4")	Horizontal Elbow (H) Inside Vertical (IV) Outside Vertical (OV)	30
		150	(6")		45
				Cross (X) Tee (T) Adjustable Vertical Riser (AR) Horizontal Adjustable Elbow (AE)	60
					90

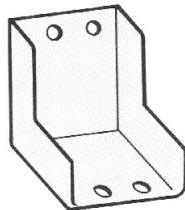
**Imperial measurements are for reference only*

**Instrumentation channel fittings are non-radiused*

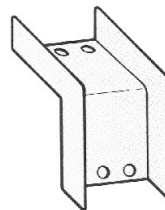
FITTING



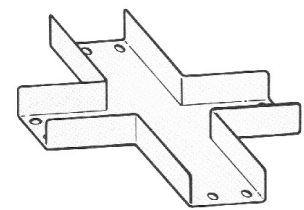
Horizontal Elbow
(H)



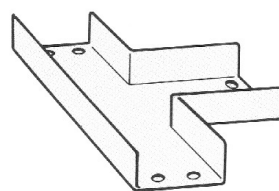
Inside Vertical
(IV)



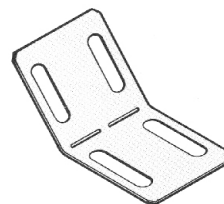
Outside Vertical
(OV)



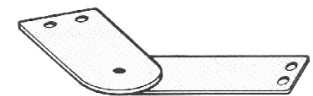
Horizontal Cross
(X)



Tee
(T)



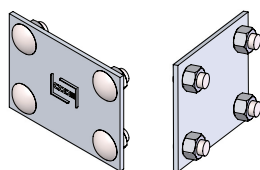
Adjustable Vertical Riser
(AR)



Horizontal Adjustable Elbow
(AE)

SPYDERLOCK

The original quick connector included with all fittings and tray.



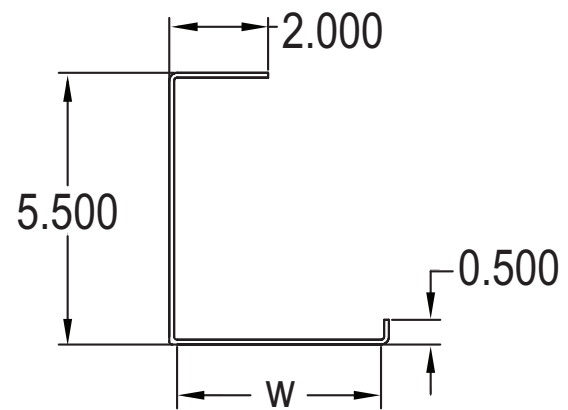
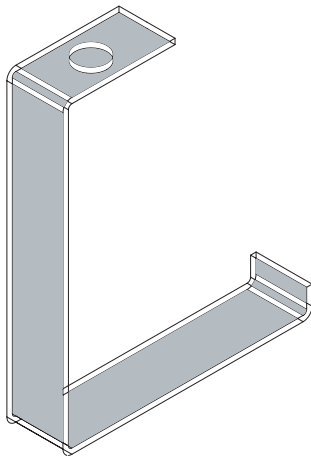
ALUMINUM - INSTRUMENTATION CHANNEL - HANGER

Instrumentational channel hanger only comes in steel

HOW TO ORDER - EXAMPLE:		SIC100-HANGER		
Material	Fitting Type	Width (W)		Style
		mm	in	
S	IC	100	(4")	HANGER
		150	(6")	

*Imperial measurements are for reference only

FITTING



SPYDERLOK

The original quick connector included with all fittings and tray.

