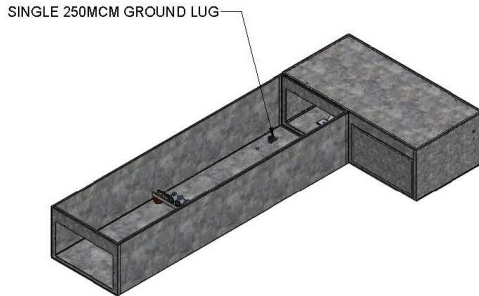
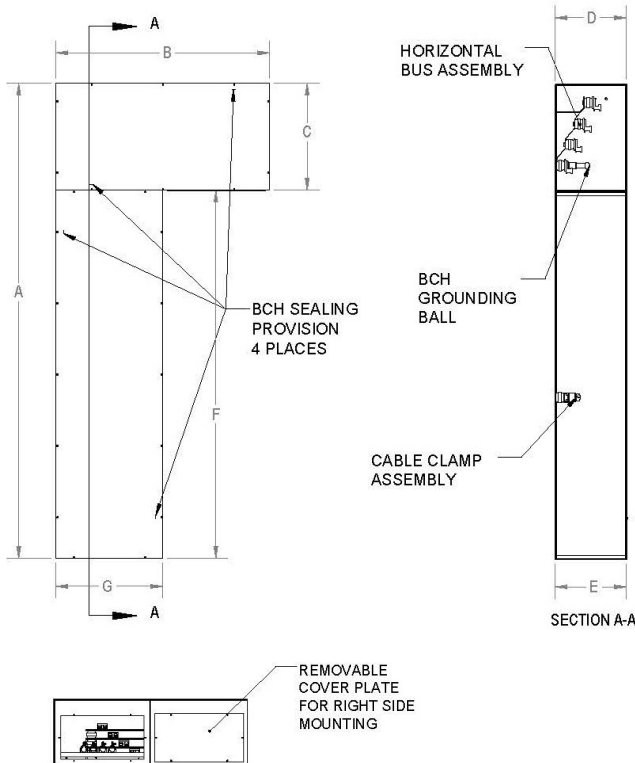


BC Hydro-2018-200-400-600-800, 1200 amp "L" Box. For service main bottom entry distribution standard.

The BC Hydro "L" boxes are used as entrance wireway and bussed service connection. Our two-piece design eliminates the confusion of specifying left or right configurations. Manufactured from galvanized steel for indoor applications.



WIREWAY COVER REMOVED



Custom Service Main Bottom Entry

To: BCH Distribution Standard
ES54 S2-01.05 R8

Material: Galvanized Steel

Rating: Indoor

Date: October 2018

BOTTOM ENTRY	A	B	C	D/E	F	G
BCHL-G-200	78	30	18	12	60	15
BCHL-G-400	80	36	18	12	62	18
BCHL-G-600	80	36	18	12	62	18
BCHL-G-800	92 ^{1/2}	48	30	12	62 ^{1/2}	18
BCHL-G-1200	92 ^{1/2}	48	30	12	62 ^{1/2}	24

BCHL 2 Pcs. for shipping

Alternate Entry:

TOP ENTRY	Height	Width	Depth
BCHT-G-200	66	31 ^{1/2}	20
BCHT-G-400 and 600	80	31 ^{1/2}	20
BCHT-G-800	92 ^{1/2}	31 ^{1/2}	20
BCHT-G-1200	92 ^{1/2}	31 ^{1/2}	20

REAR ENTRY

BCHR-G-200	66	20	31 ^{1/2}
BCHR-G-400 and 600	80	20	31 ^{1/2}
BCHR-G-800	92 ^{1/2}	20	31 ^{1/2}
BCHR-G-1200 and 1600	92 ^{1/2}	20	31 ^{1/2}

SIDE ENTRY

BCHS-G-200	66	31 ^{1/2}	20
BCHS-G-400 and 600	80	31 ^{1/2}	20
BCHS-G-800	92 ^{1/2}	31 ^{1/2}	20
BCHS-G-1200 + 1600	92 ^{1/2}	31 ^{1/2}	20

CABLE CLAMP KIT

BCHCA-0200	
BCHCA-0400	
BCHCA-0600	
BCHCA-0800	
BCHCA-1200	

ADDITIONAL ITEMS SUGGESTED APPLICATIONS

PAD-G-4824	4ft/225 amp/4wire
PAD-G-4844	4ft/400 amp/4wire
PAD-G-4864	4ft/600 amp/4 wire
CT-G-301608	single phase
CT-G-421816	up to 425 amp single phase up to 600 amp 3 phase
CT-G-423624	600 - 1000 amp 3 phase

*Standard recommended boxes: Top, Rear, and Side Entry Pull Boxes.
To be used in addition to the BCHL-G-200, 400, 600, 800 and 1200 amp.

SPECIALTY BOXES