

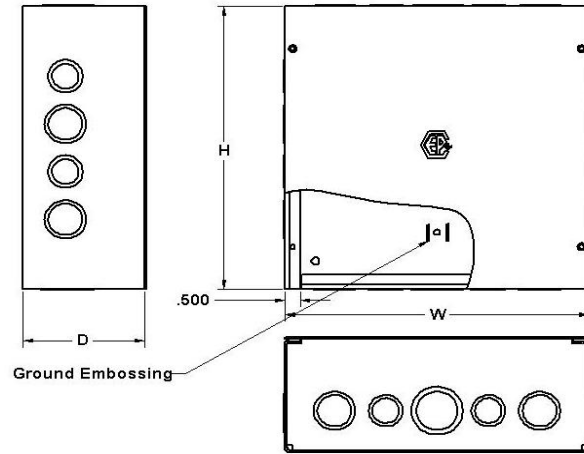
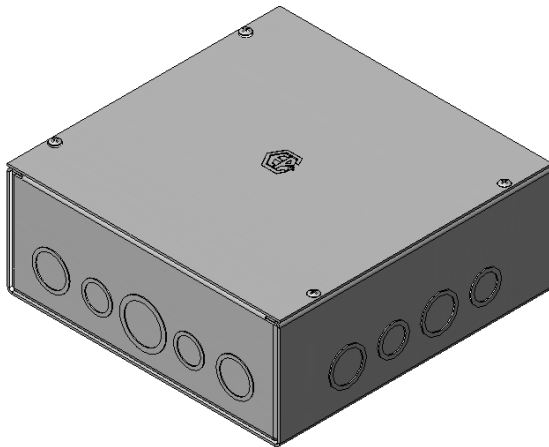
CSA 1 PULL BOXES STEEL SCREW COVER

The D-STL series boxes are used as junction or pull boxes. They are suitable for indoor application, and surface mounting. They are manufactured from 16 Ga or 14 Ga steel. There are concentric knock-outs on 6x6x3 to 12x12x6. They come complete with screw cover, four internal mounting holes and

A grounding provision .

The boxes are finished with heat fused polyester powder, electrostatically applied on a phosphatized base, ASA-61 Grey. Options include: flush covers, back panel plates and custom paint colors.

C.S.A. Certified / UL Listed



<u>CAT No:</u>	<u>H</u>	<u>W</u>	<u>D</u>	<u>LBS</u>
D-S-060603	6	6	3	2.0
D-S-060604	6	6	4	2.5
D-S-080804	8	8	4	4.0
D-S-080806	8	8	6	32.0
D-S-101004	10	10	4	4.0
D-S-101006	10	10	6	15.0
D-S-121204	12	12	4	5.0
D-S-121206	12	12	6	22.0
D-S-161606	16	16	6	14.0
D-S-161608	16	16	8	14.0
D-S-181804	18	18	4	7.0
D-S-181806	18	18	6	15.0
D-S-242406	24	24	6	28.0
D-S-242408	24	24	8	33.0
D-S-242410	24	24	10	37.0