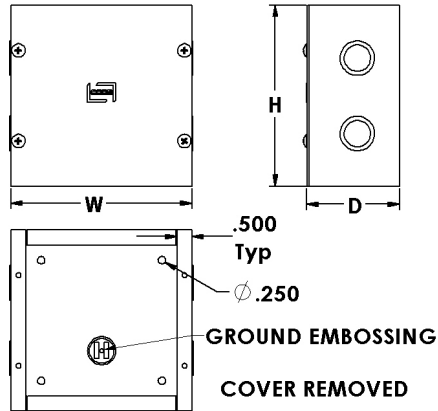
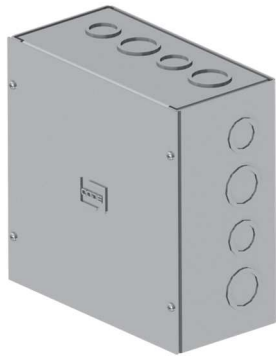


# CSA 1 PULL BOXES ALUMINUM SCREW COVER

The D-A series boxes are used as junction or pull boxes. Manufactured from 12 Ga or 10 Ga aluminum, they are suitable for indoor application, and surface mounting. The enclosures are complete with screw cover.

Four internal mounting holes and grounding provisions are included. Options include: flush covers and back panels .

**C.S.A. Certified / UL Listed**  
**STOCKED IN PORT COQUITLAM**



CAT. No:	H	W	D	LBS.
D-A-060603	6	6	3	2.0
D-A-060604	6	6	4	2.5
D-A-060606	6	6	6	2.0
D-A-080804	8	8	4	2.5
D-A-080806	8	8	6	3.0
D-A-101004	10	10	4	3.0
D-A-101006	10	10	6	4.0
D-A-120606	12	6	6	3.0
D-A-120904	12	9	4	4.0
D-A-121204	12	12	4	4.0
D-A-121206	12	12	6	5.0
D-A-180904	18	9	4	5.0
D-A-181006	18	10	6	7.5
D-A-181806	18	18	6	11.0
D-A-240604	24	6	4	5.0
D-A-240805	24	8	5	6.0
D-A-241006	24	10	6	8.0
D-A-241507	24	15	7	14.0
D-A-241809	24	18	9.5	17.0
D-A-302010	30	20	10	23.0
D-A-303010	30	30	10	30.0

CAT. No:	H	W	D	LBS.
D-A-360604	36	6	4	8.0
D-A-360805	36	8	5	10.0
D-A-360904	36	9	4	11.0
D-A-361006	36	10	6	13.5
D-A-361507	36	15	7	19.0
D-A-361809	36	18	9.5	24.0
D-A-363014	36	30	14	42.0
D-A-402412	40	24	12	36.0
D-A-480604	48	6	4	10.5
D-A-480805	48	8	5	14.0
D-A-480904	48	9	4	14.0
D-A-481006	48	10	6	17.0
D-A-481507	48	15	7	24.5
D-A-481809	48	18	9.5	31.0
D-A-720604	72	6	4	15.5
D-A-720805	72	8	5	20.5
D-A-720904	72	9	4	21.0
D-A-721006	72	10	6	26.0
D-A-721507	72	15	7	35.0
D-A-721809	72	18	9.5	44.0