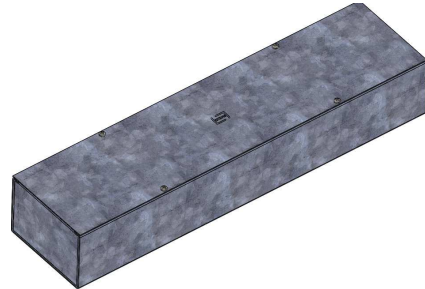
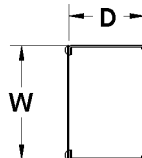
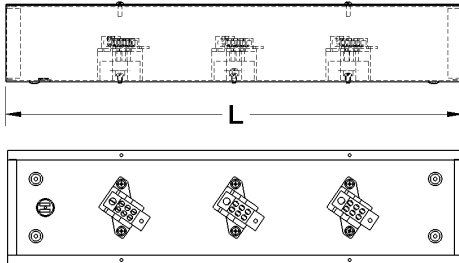


# CSA 1 PAD TYPE SPLITTER TROUGH STEEL

The PAD-G splitter troughs are designed for 600 V (max.) service, 3 or 4 wires. They are manufactured from 16 Ga or 14 Ga galvanized steel. The enclosures have mounting holes in the back, and come

complete with screw cover. The splitter blocks are factory installed. Options include: hinged cover and custom paint colors .  
**C.S.A. Certified**  
**STOCKED IN PORT COQUITLAM**



Define:            **PAD**                    **A**                    **B**                    **C**  
                          Series                    Length                    Amperage                    Number of wires

Example : **PAD-G-3613**: 36 inches /125 Amp / 3

Cat. No.		Main Lugs			Branch Lugs					
3 Wire	4 Wire	Amp	Qty.	Wires	Qty.	Wires	L	W	D	LBS
PAD-G-2413	_____	125	1	14-1/0	6	14-2	24	6	4	10.0
PAD-G-3613	PAD-G-3614						36	6	4	17.0
PAD-G-4813	PAD-G-4814						48	6	4	20.0
PAD-G-6013	PAD-G-6014						60	6	4	24.0
PAD-G-7213	PAD-G-7214						72	6	4	33.0
PAD-G-2423	_____	225	1	6-300 MCM	6	14-2/0	24	8	5	13.0
PAD-G-3623	PAD-G-3624						36	8	5	22.0
PAD-G-4823	PAD-G-4824						48	8	5	30.0
PAD-G-6023	PAD-G-6024						60	8	5	40.0
PAD-G-7223	PAD-G-7224						72	8	5	46.0
PAD-G-3643	_____	400	2 x 1/0-250 MCM or 1 x 4 - 600 MCM	2 x 14-3/0 and 4 x 6-4/0			36	10	6	28.0
PAD-G-4843	PAD-G-4844						48	10	6	36.0
PAD-G-6043	PAD-G-6044						60	10	6	50.0
PAD-G-7243	PAD-G-7244						72	10	6	55.0
PAD-G-4863	PAD-G-4864	600	4 x 1/0-250 MCM or 2 x 4 - 600 MCM	2 x 14-3/0 and 4 x 6-4 /0			48	10	6	37.0
PAD-G-6063	PAD-G-6064						60	10	6	50.0
PAD-G-7263	PAD-G-7264						72	10	6	53.0