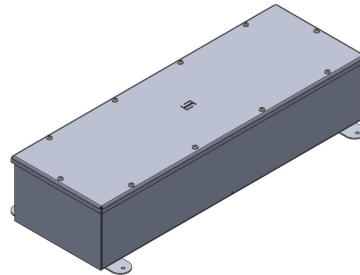
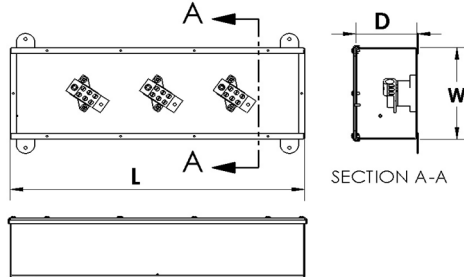


# CSA 3 PAD WEATHERPROOF TYPE SPLITTER TROUGH

The PAD splitter troughs are designed for 600 V (max.) service, 3 or 4 wires. They are manufactured from 12 Ga or 10 Ga aluminum. The enclosures have mounting holes in the back, and come complete with screw cover.

The splitter blocks are factory installed. Options include: hinged cover, weatherproof, and painted. C.S.A. Certified



Define: **PAD-WP-A** Series      **A** Length      **B** Amperage      **C** Number of wires

Example : **PAD-WP-A-3613**: 36 inches / 125 Amp /

Cat. No.		Main Lugs			Branch Lugs					
3 Wire	4 Wire	Amp	Qty.	Wires	Qty.	Wires	L	W	D	LBS.
PAD-WP-A-2413	—————	125	1	14-1/0	6	14-2	24	6	4	10.0
PAD-WP-A-3613	PAD-WP-A-3614						36	6	4	17.0
PAD-WP-A-4813	PAD-WP-A-4814						48	6	4	20.0
PAD-WP-A-6013	PAD-WP-A-6014						60	6	4	24.0
PAD-WP-A-7213	PAD-WP-A-7214						72	6	4	33.0
PAD-WP-A-2423	—————	225	1	6-300 MCM	6	14-2/0	24	8	5	13.0
PAD-WP-A-3623	PAD-WP-A-3624						36	8	5	22.0
PAD-WP-A-4823	PAD-WP-A-4824						48	8	5	30.0
PAD-WP-A-6023	PAD-WP-A-6024						60	8	5	40.0
PAD-WP-A-7223	PAD-WP-A-7224						72	8	5	46.0
PAD-WP-A-3643	—————	400	2 x 1/0-250 MCM or 1 x 4 – 600 MCM	2 x 14-3/0 and 4 x 6-4/0			36	10	6	28.0
PAD-WP-A-4843	PAD-WP-A-4844						48	10	6	36.0
PAD-WP-A-6043	PAD-WP-A-6044						60	10	6	50.0
PAD-WP-A-7243	PAD-WP-A-7244						72	10	6	55.0
PAD-WP-A-4863	PAD-WP-A-4864	600	4 x 1/0-250 MCM or 2 x 4 – 600 MCM	2 x 14-3/0 and 4 x 6-4/0			48	10	6	37.0
PAD-WP-A-6063	PAD-WP-A-6064						60	10	6	50.0
PAD-WP-A-7263	PAD-WP-A-7264						72	10	6	53.0