

# B.C. HYDRO - 2017 200-400-600-800 AMP 'L' BOX

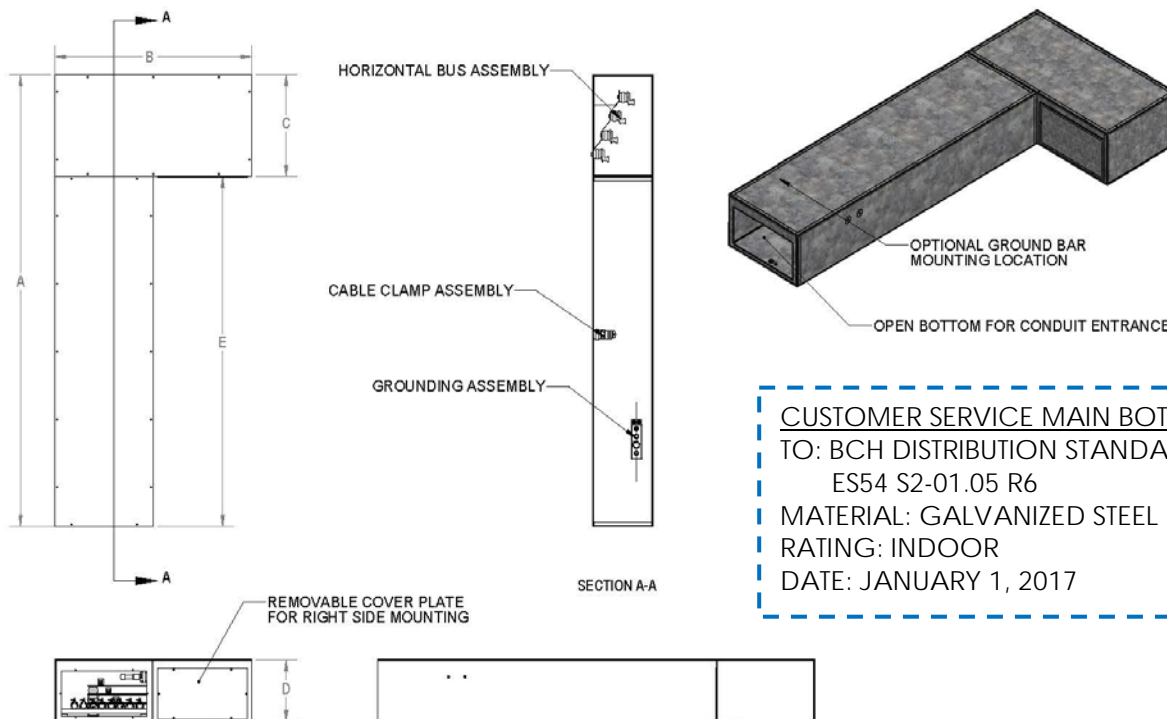


**B.C. Hydro new standard effective January 1, 2017.**

*All contracts signed off in 2017 will follow new standard, projects signed off in 2016 with on going work into 2017 may be exempt from new standard.*

Catalogue Part Number	A	B	C	D	E
BCHL-G-200	66	30	18	11	48
BCHL-G-400	80	36	18	11	62
BCHL-G-600	80	36	18	11	62
BCHL-G-800	92.5	48	30	11	62.5

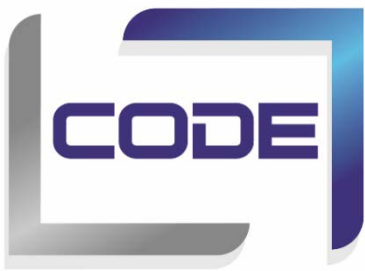
\*\* BCHL 2 Pcs. for shipping



**CUSTOMER SERVICE MAIN BOTTOM ENTRY**  
 TO: BCH DISTRIBUTION STANDARD  
 ES54 S2-01.05 R6  
 MATERIAL: GALVANIZED STEEL  
 RATING: INDOOR  
 DATE: JANUARY 1, 2017

**SEE OTHER SIDE FOR ADDITIONAL PRODUCTS AND OPTIONS FOR INSTALLATION.**

**FOR TECHNICAL SUPPORT PLEASE CONTACT THE CODE SALES TEAM**



# B.C. HYDRO - 2017 Standard Products



**STANDARD RECOMMENDED BOXES: TOP, REAR, AND SIDE ENTRY PULL BOXES.**

**MAY BE USED WITH, OR IN ADDITION TO THE BCHL-G-200, 400, 600 AND 800**

Catalogue Part Number	A	B	C
<b>TOP ENTRY</b>			
BCHT-G-200	66	20	11
BCHT-G-400 AND 600	80	20	11
BCHT-G-800	92.5	20	11
<b>REAR ENTRY</b>			
BCHR-G-200	66	20	32
BCHR-G-400 AND 600	80	20	32
BCHR-G-800	92.5	20	32
<b>SIDE ENTRY</b>			
BCHS-G-200	66	32	11
BCHS-G-400 AND 600	80	32	11
BCHS-G-800	92.5	32	11
<b>CABLE CLAMP KIT</b>			
BCHCA-0200			
BCHCA-0400			
BCHCA-0600			
BCHCA-0800			

Catalogue Part Number	Suggested Applications	Catalogue Part Number	Suggested Applications
PAD-G-4824	200 amp/4 wire	CT-G-301608	400/600 amp
PAD-G-4844	400 amp/4 wire	CT-G-421816	600/800 amp
		BCHP-G-4808	7 PCS. / PKG
PAD-G-4864	600 amp/4 wire	BCHP-G-4808	7 PCS /PKG

**SEE OTHER SIDE FOR BC HYDRO L BOX OPTIONS**

**FOR TECHNICAL SUPPORT PLEASE CONTACT THE CODE SALES TEAM**

548 Nicola Place, Port Coquitlam, B.C., V3B 0K4

Phone: 604.540.0011 Toll Free: 1.888.222.CODE Fax: 604.540.0033

sales@codeelectric.com www.codeelectric.com