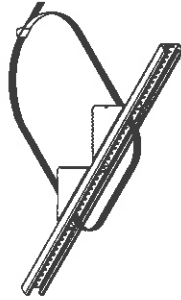


C:\Vault\Workspaces\Inventor_Dwg\Inv-8\880PM\880PM24.dwg

Tolerance ±1/32" unless otherwise specified
All knockouts are actual size / Les découpages sont grandeur réel

No.	Revisions	Date	By/Par
1	Change grey paint to zinc plated	09-Dec-08	Patrick
1.1	Add 0.052" round corner to bracket	08-Apr-09	Patrick
2	Modified Strut & Bracket	19-Dec-14	MichaelA
3.2	Remove Screw, Modify Bracket, Change Strut Thickness	05-Feb-15	MichaelA

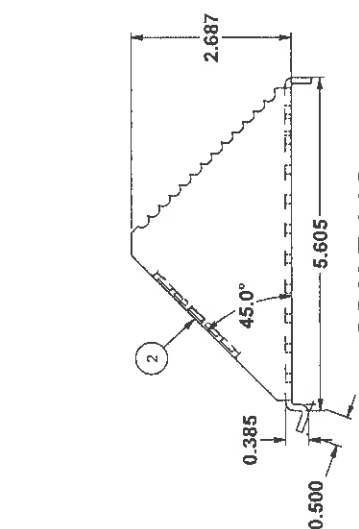


Isometric View

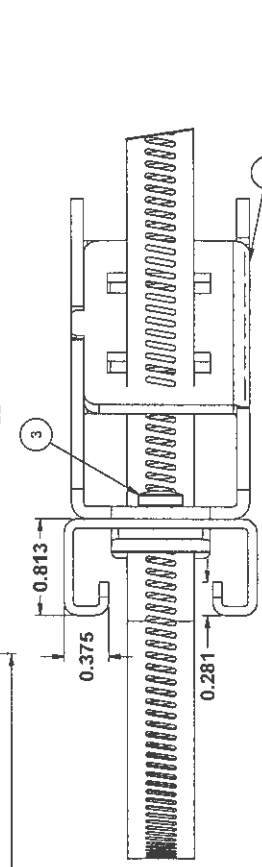
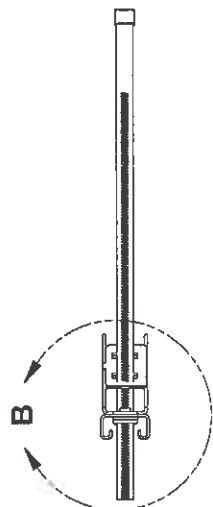
Flatness
Aplaisissement
Tol: 0.003
Max: 3.0mm
Projection

Customer: Patrick Deschênes
Client: Patrick Deschênes
Drawn By: Patrick Deschênes
Date: 22-Sep-07

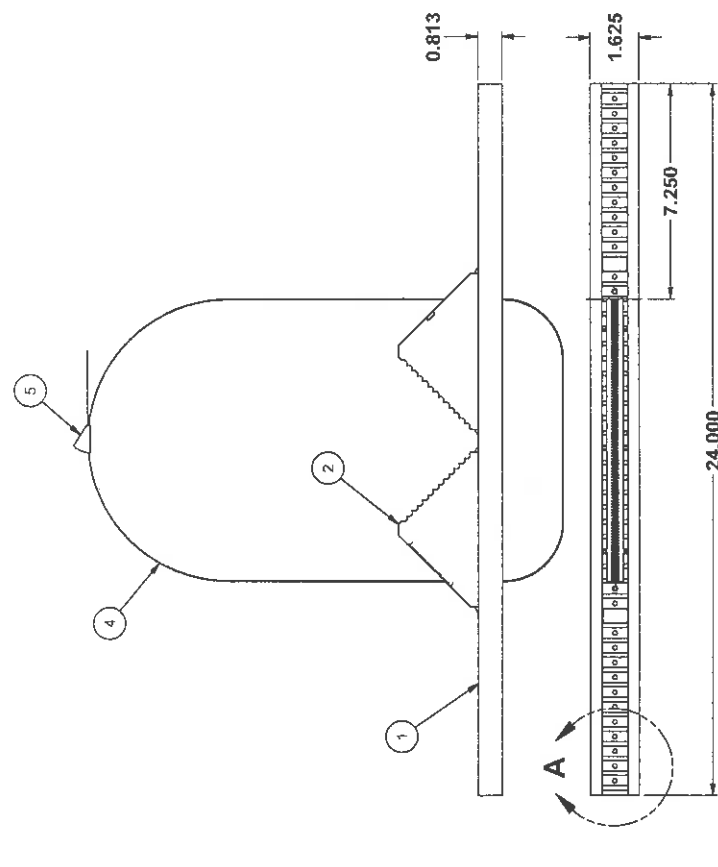
Color	Finish	See Part List
Color	Finish	See Part List
Description 880 PM24 Pole Mount 24"		
Part Number	Rev.	1
Numero Piece	Rev.	3.2



SCALE 1 / 2



DETAIL B



DETAIL A
SCALE 1 : 1

Item	Qty	Part Number	Rev	Description	Material	Color	Finish
1	2	880PM24B	3.2	880 PM24 Pole Mount - Saco Strut S7	2mm Sheet Steel	Bright	Zinc Plated
2	4	880PM-BR	3.2	880 PM Pole Mount - Bracket	12 Ga H.R.P. & O	Bright	Zinc Plated
3	8	STK-Q-05020	5	M5 x 8mm Thread Rolling Screw	Property Class 4.8 Steel	Bright	Zinc Plated
4	2	STK-Q-79800	0	880 PM Pole Mount - Strap	Stainless Steel	Bright	Reversed Chrome Plated
7	4	STK-Q-02800	0	Hexagon Cap Screw 3/8-16 x 3/4"	Property Class 8 Steel	Bright	Zinc Plated
8	4	STK-Q-07500	0	Saco 3/8-16 Clamping Nut S38	Property Class 8 Steel	Bright	Zinc Plated
9	4	STK-Q-10261	1	M10 Sealing Washer	See Part List	See Part List	See Part List
6	1	STK-Q-83800	0	880 PM - Instruction Sheet	White Paper	Printed Black on White	N/A