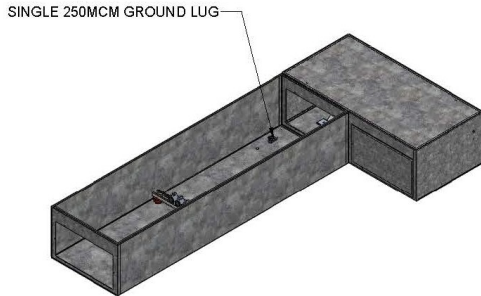
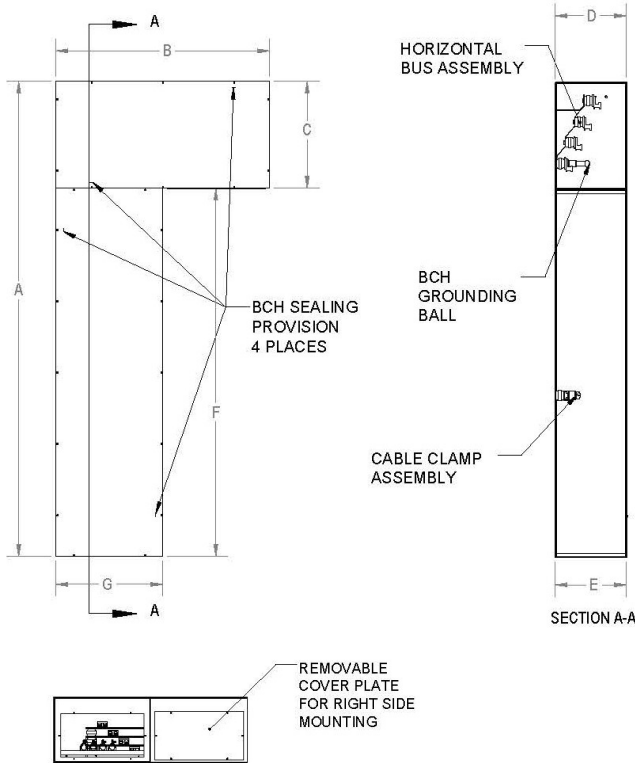


## BC Hydro-2018-200-400-600-800, 1200 amp "L" Box. For service main bottom entry distribution standard.

The BC Hydro "L" boxes are used as entrance wireway and bussed service connection. Our two-piece design eliminates the confusion of specifying left or right configurations. Manufactured from galvanized steel for indoor applications.



WIREWAY COVER REMOVED



### Custom Service Main Bottom Entry

To: BCH Distribution Standard  
ES54 S2-01.05 R8

Material: Galvanized Steel

Rating: Indoor

Date: October 2018

| BOTTOM ENTRY  | A                 | B  | C  | D/E | F                 | G  |
|---------------|-------------------|----|----|-----|-------------------|----|
| BCHL-G-200    | 78                | 30 | 18 | 12  | 60                | 15 |
| BCHL-G-400    | 80                | 36 | 18 | 12  | 62                | 18 |
| BCHL-G-600    | 80                | 36 | 18 | 12  | 62                | 18 |
| * BCHL-G-800  | 92 <sup>1/2</sup> | 48 | 30 | 12  | 62 <sup>1/2</sup> | 18 |
| * BCHL-G-1200 | 92 <sup>1/2</sup> | 48 | 30 | 12  | 62 <sup>1/2</sup> | 24 |

BCHL 2 Pcs. for shipping \* Ensure space is sufficient to fit customer main "F"  
See BCHV-G-800/1200 alternative option

### Alternate Entry:

| TOP ENTRY          | Height            | Width             | Depth |
|--------------------|-------------------|-------------------|-------|
| BCHT-G-200         | 66                | 31 <sup>1/2</sup> | 20    |
| BCHT-G-400 and 600 | 80                | 31 <sup>1/2</sup> | 20    |
| BCHT-G-800         | 92 <sup>1/2</sup> | 31 <sup>1/2</sup> | 20    |
| BCHT-G-1200        | 92 <sup>1/2</sup> | 31 <sup>1/2</sup> | 20    |

### REAR ENTRY

|                      |                   |    |                   |
|----------------------|-------------------|----|-------------------|
| BCHR-G-200           | 66                | 20 | 31 <sup>1/2</sup> |
| BCHR-G-400 and 600   | 80                | 20 | 31 <sup>1/2</sup> |
| BCHR-G-800           | 92 <sup>1/2</sup> | 20 | 31 <sup>1/2</sup> |
| BCHR-G-1200 and 1600 | 92 <sup>1/2</sup> | 20 | 31 <sup>1/2</sup> |

### SIDE ENTRY

|                    |                   |                   |    |
|--------------------|-------------------|-------------------|----|
| BCHS-G-200         | 66                | 31 <sup>1/2</sup> | 20 |
| BCHS-G-400 and 600 | 80                | 31 <sup>1/2</sup> | 20 |
| BCHS-G-800         | 92 <sup>1/2</sup> | 31 <sup>1/2</sup> | 20 |
| BCHS-G-1200 + 1600 | 92 <sup>1/2</sup> | 31 <sup>1/2</sup> | 20 |

### CABLE CLAMP KIT

|            |  |  |  |
|------------|--|--|--|
| BCHCA-0200 |  |  |  |
| BCHCA-0400 |  |  |  |
| BCHCA-0600 |  |  |  |
| BCHCA-0800 |  |  |  |
| BCHCA-1200 |  |  |  |

### ADDITIONAL ITEMS SUGGESTED APPLICATIONS

|             |   |
|-------------|---|
| PAD-G-4824  | 4ft/225 amp/4wire                                   |
| PAD-G-4844  | 4ft/400 amp/4wire                                   |
| PAD-G-4864  | 4ft/600 amp/4 wire                                  |
| CT-G-301608 | single phase  |
| CT-G-421816 | up to 425 amp single phase<br>up to 600 amp 3 phase |
| CT-G-423624 | 600 - 1000 amp 3 phase                              |

\*Standard recommended boxes: Top, Rear, and Side Entry Pull Boxes.  
To be used in addition to the BCHL-G-200, 400, 600, 800 and 1200 amp.

SPECIALTY BOXES