



DIMMER PANELS

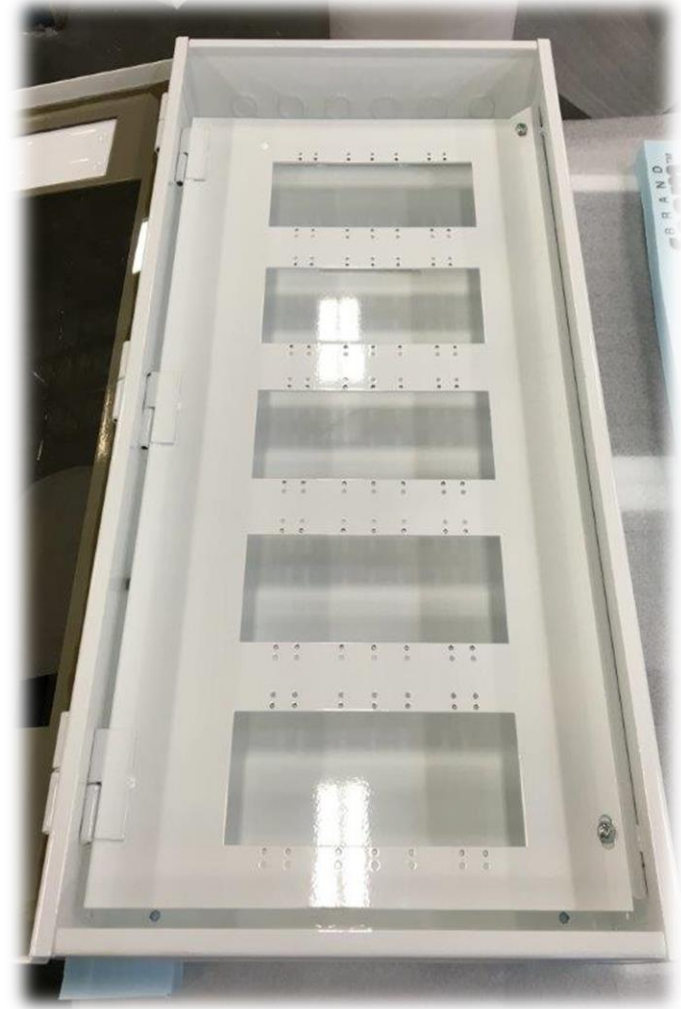
548 Nicola Place, Port Coquitlam, B.C., V3B 0K4

Tel: 604-540-0011

www.codeelectric.com

Code Electric Products, 548 Nicola Place,
Port Coquitlam, B.C., Tel: 604-540-0011,
www.codeelectric.com

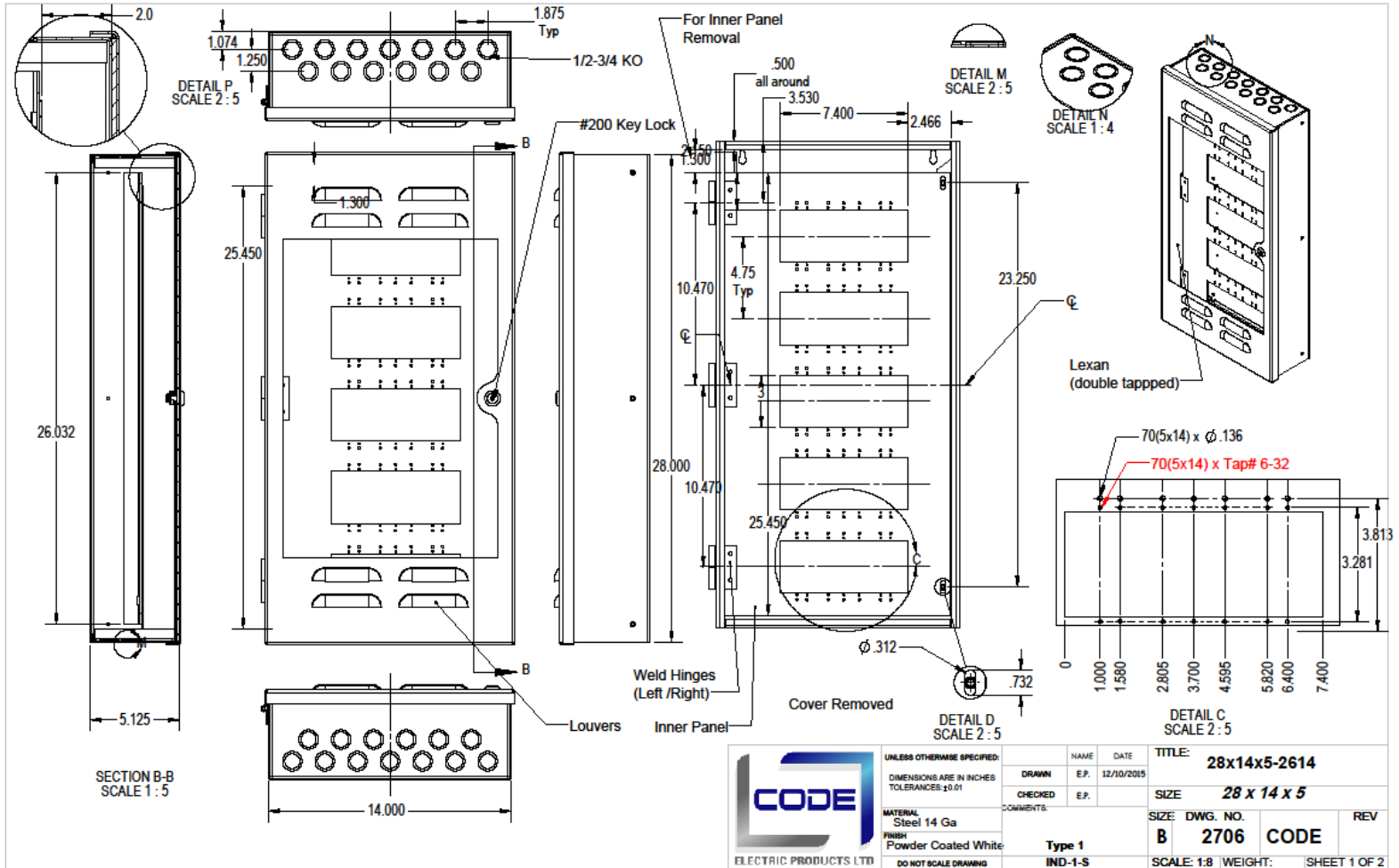
“In Production”



Code Electric Products, 548 Nicola Place,
Port Coquitlam, B.C., Tel: 604-540-0011,
www.codeelectric.com



ELECTRIC PRODUCTS LTD



<p>ELECTRIC PRODUCTS LTD</p>	UNLESS OTHERWISE SPECIFIED:	NAME	DATE	TITLE:	28x14x5-2614			
	DIMENSIONS ARE IN INCHES TOLERANCES: ±0.01	DRAWN	E.P.	12/10/2015	SIZE:	28 x 14 x 5		
	MATERIAL Steel 14 Ga	CHECKED	E.P.		SIZE DWG. NO.:	B	2706	CODE
	FINISH Powder Coated White	COMMENTS:	Type 1		SCALE: 1:8	WEIGHT:	SHEET 1 OF 2	
DO NOT SCALE DRAWING		IND-1-S						

THE INFORMATION CONTAINED IN THIS DRAWING IS THE SOLE PROPERTY OF CODE ELECTRIC PRODUCTS LTD. ANY REPRODUCTION IN PART OR AS A WHOLE WITHOUT THE WRITTEN PERMISSION OF CODE ELECTRIC PRODUCTS IS PROHIBITED.

Code Electric Products, 548 Nicola Place,
Port Coquitlam, B.C., Tel: 604-540-0011,
www.codeelectric.com

DIMMER PANELS –CUSTOM

A full line of empty dimmer panel solutions

Dimmer Panels are used for lighting controls. We design, fabricate, and powder coat a large variety of enclosures that have dimmer cut outs on the cover or, on the inner panels. They can be manufactured from aluminum, stainless steel, or powder coated steel in a large variety of colours.

Custom sizes and multiple device locations and combinations are available.

Options include:

- solid or lexan door
- inner panel
- knockouts
- lockable.



604-540-0011

Fax: 604-540-0033 Toll Free: 1-888-222-CODE

sales@codeelectric.com

36

DIMMER PANELS - CUSTOM



DESIGN FABRICATE POWDER COAT

Code Manufactures A Full Line Of Empty Dimmer Panel Solutions.

Multiple Device Configurations And Enclosures Sizes.

Options Include:

Solid Or Lexan Doors For Wireless Applications, Inner Panel, Louvers, Knockouts And A Large Selection Of Powder Coating Colors.

Code Can Create A Dimmer Panel For All Your Complex And Architectural Dimming Situations.

548 NICOLA PLACE
PORT COQUITLAM, B.C.
V3B 0K4

TEL: 604-540-0011

sales@codeelectric.com

www.codeelectric.com



DIMMER PANELS - CUSTOM



DESIGN FABRICATE POWDER COAT

Code Manufactures A Full Line Of Empty Dimmer Panel Solutions.

Multiple Device Configurations And Enclosures Sizes.

Options Include:

Solid Or Lexan Doors For Wireless Applications, Inner Panel, Louvers, Knockouts And A Large Selection Of Powder Coating Colors.

Code Can Create A Dimmer Panel For All Your Complex And Architectural Dimming Situations.

548 NICOLA PLACE
PORT COQUITLAM, B.C.
V3B 0K4

TEL: 604-540-0011

sales@codeelectric.com

www.codeelectric.com

