

# ACCESSORIES

## Handles and Latches



**Padlockable type handle**  
Cat. No: DCM-HAN-L-P-  
(FAUIND#680-2106)  
Suitable for indoor or outdoor use



**Key lockable type handle**  
Cat. No: DCM-HAN-L-P-  
(SIEPAC#3202)  
Suitable for indoor or outdoor use



**1/4 turn plated screw driver operated latch**  
Cat.No:DCM-QT-B-SCREW-SLOT  
Suitable for indoor or outdoor use



**Stainless steel screw driver operated 1/4 turn latch**  
Cat.No:DCM-QT-SS-SCREW-SLOT  
Suitable for indoor or outdoor use



**1/4 turn plated pad lockable wing knob**  
Cat. No: DCM-QT-B-WING-PAD  
Suitable for indoor or outdoor use



**1/4 turn plated keylocking latch**  
Cat.No: DCM-QT-P-K#200  
Suitable for indoor use



**1/4 plated key locking wing knob**  
Cat. No: DCM-QT-P-WING-KEY  
Suitable for indoor or outdoor

3 Point Latching Assemblies also available.

## Pad lockable Hasps and Carry Handles



**Zinc plated padlock hasp**  
Large and small sizes available.  
Cat. No: DCM-CATSTRKR-P-  
(SIEPAC#207ZN1)  
Suitable for indoor or outdoor use.



**Zinc plated heavy duty hasp**  
Cat. No: DCM-CAT-P-  
(FAUIND#772-0671)  
Suitable for indoor or outdoor use.



**Stainless steel padlock hasp**  
Large and small sizes available.  
Cat. No: DCM-CAT-SS-  
(FAUIND#776-4206)  
Suitable for indoor or outdoor use.







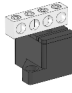
**4" Zinc plated chest handle**  
Cat. No. ACC-HANDLE 4  
Suitable for indoor or outdoor use





Stainless steel and powder coated handles are available upon request

# ACCESSORIES

## Splitter Blocks and Lugs

### Pad Type Splitter

<u>Cat No.</u>	<u>Amp</u>	<u>Incoming Wire Range</u>	<u>Branch Wire Range</u>
 PAD-T-125	125	One 14 – 1/0	Six 14 – 2
 PAD-T-225	225	One 6 – 300 MCM	Six 14 – 2/0
 PAD-T-400	400	Two 1/0 – 250 MCM or One 4 – 600 MCM	Two 14-3/0 Four 6 -4/0
 PAD-T-600	600	Four 1/0 – 250 MCM or Two 4 – 600 MCM	Two 14-3/0 Four 6 -4/0
 PAD-TB-125	125	One 14 - 2/0	Three 14 - 2/0

<u>Cat No.</u>	<u>Wire Range</u>
 LUG-PA-SHR-100	Four 2/0-14
 LUG-PA-LNG-100	Seven 2/0-14
 LUG-PA-SHR-200	Two 300 MCM-6 Two 2/0-14
 LUG-PA-LNG-200	Six 2/0-14 Two 300 MCM-6

# ACCESSORIES

## Splitter Blocks and Lugs

### LUGS

- Manufactured from high strength 6061-T6 aluminum alloy
- Electro-tin plated
- CSA Certified and UL Listed
- I-Beam construction
- Suitable for use either copper or aluminum conductors
- Provides low contact resistance
- Ensure reliability for copper or aluminum conductors
- Reduces material content while maintaining the same performance standards as full sized connectors

<u>Cat No.</u>	<u>Wire Range</u>
Lug-PA-1-2/0	2/0-6
Lug-PA-1-0250	250 MCM-6
Lug-PA-1-0350	350 MCM-6
Lug-PA-1-0500	500 MCM-4
Lug-PA-1-0600	600 MCM-2
Lug-PA-1-0800	800 MCM-300 MCM
Lug-PA-1-1000	1000 MCM-350 MCM
Lug-PA-2-2/0	Two 2/0-6
Lug-PA-2-0250	Two 250 MCM-6
Lug-PA-2-0350	Two 350 MCM-6
Lug-PA-2-0600	Two 600 MCM-2
Lug-PA-2-0800	Two 800 MCM-300 MCM
Lug-PA-2-1000	Two 1000 MCM-350 MCM
Lug-PA-2PB-0500	Two 500 MCM-4
Lug-PA-2PB-0600	Two 600 MCM-2
Lug-PA-2PB-0750	Two 750 MCM-4
Lug-PA-3-3/0	Triple 3/0-6
Lug-PA-3-2/0	Triple 2/0-6
Lug-PA-3-0250	Triple 250 MCM-6
Lug-PA-3-0500	Triple 500 MCM-4
Lug-PA-3-0600	Triple 600 MCM-2



# ACCESSORIES

## Copper Bus

Cat No.	Size
BB-C-0025x0100	1/4x1
BB-C-0025x0150	1/4x1 1/2
BB-C-0025x0200	1/4x2
BB-C-0025x0300	1/4x3
BB-C-0025x0400	1/4x4
BB-C-0025x0500	1/4x5
BB-C-0025x0600	1/4x6

Other sizes available upon request



## Aluminum Bus Bar

Cat No.	Size
BB-A-0025x0100	1/4x1
BB-A-0025x0150	1/4x1 1/2
BB-A-0025x0200	1/4x2
BB-A-0025x0300	1/4x3

Other sizes available upon request.

### Red Standoff Insulators

Cat No. INS-RED  
 1 3/8 High 1 3/4 Wide  
 3/8 Thread size  
 Other sizes available upon request.



## Neoprene Oil Resistant

Cat No.	Size
GASKET-BLACK-0025x0100	1/4x1
GASKET-BLACK-0025x0075	1/4x3/4
GASKET-BLACK-0012x0075	1/8x3/4
GASKET-BLACK-0012x0100	1/8x1

Cork gasket available upon request



### Copper Neutral Bar

Cat No. N-174  
 Accepts 14-6 wire size

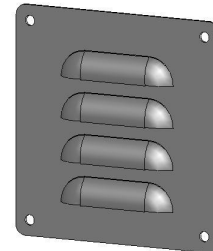


### Touch Up Spray Paint

Cat No. 880-PG  
 ASA-61 Grey

## Steel Louver Plates Powder Coated ASA-61 Grey

Cat No.	Louvers	A= Height	B= Width
LP-S-2	4	5.5	5.5
LP-S-3	8	10.437	5.5
LP-S-4	12	15.312	5.5



## Natural Aluminum Louver Plates

Cat. No.	Louvers	A= Height	B= Width
LP-A-2	4	5.5	5.5
LP-A-3	8	10.437	5.5
LP-A-4	12	15.312	5.5

