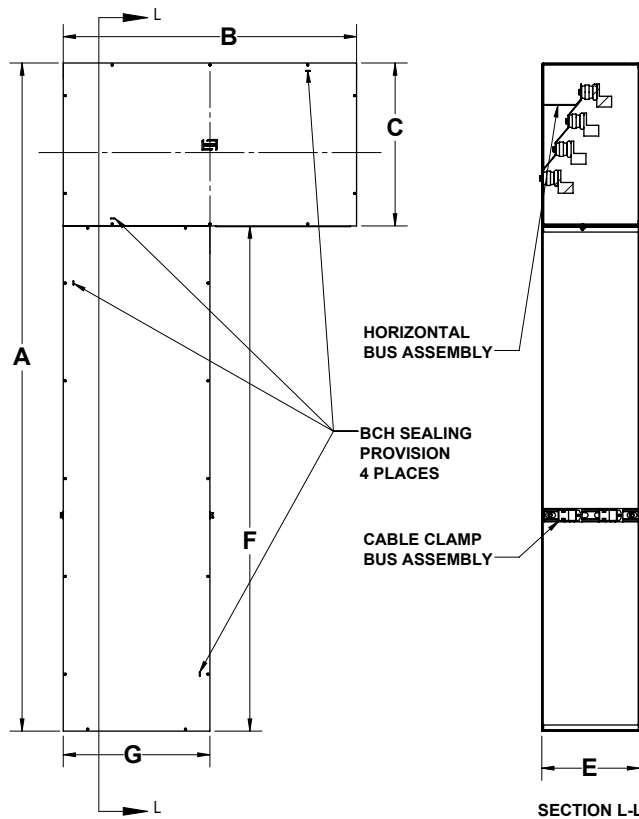
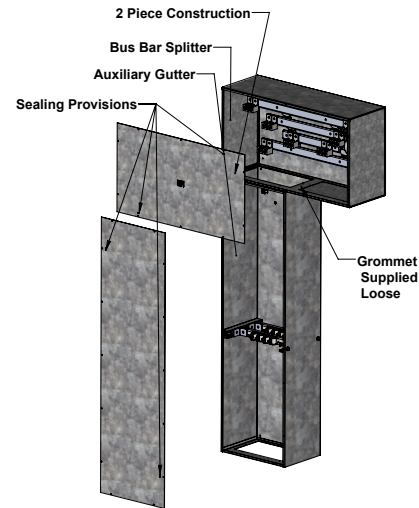


The BC Hydro "L" boxes are used as entrance wireway and bussed service connection. Our two-piece design eliminates the confusion of specifying left or right configurations.

Manufactured from galvanized steel for indoor applications.

BOTTOM ENTRY	A	B	C	E	F	G
BCHL-G-200	78	30	18	12	60	15
BCHL-G-400	82	36	20	12	62	18
BCHL-G-600	82	36	20	12	62	18
*BCHL-G-800	92 <sup>1/2</sup>	48	30	12	62 <sup>1/2</sup>	18
*BCHL-G-1200	92 <sup>1/2</sup>	48	30	18	62 <sup>1/2</sup>	24

\*Ensure space is sufficient to fit customer main "F". See BCHV-G-800/1200 alternative option. BCHL 2 Pcs. for shipping



Reference only- call sales for updated information

### Custom Service Main Bottom Entry

To: BCH Distribution Standard  
ES54 S2-01.05 R8

Material: Galvanized Steel

Rating: Indoor

Date: October 2018

### Alternate Entry:

TOP ENTRY	Height	Width	Depth
BCHT-G-0200	78	31 <sup>1/2</sup>	20
BCHT-G-0400 + 0600	82	31 <sup>1/2</sup>	20
BCHT-G-0800	90	31 <sup>1/2</sup>	20
BCHT-G-1200 + 1600	90	31 <sup>1/2</sup>	20

### REAR ENTRY

BCHR-G-0200	78	20	31 <sup>1/2</sup>
BCHR-G-0400 + 0600	82	20	31 <sup>1/2</sup>
BCHR-G-0800	90	20	31 <sup>1/2</sup>
BCHR-G-1200 + 1600	90	20	31 <sup>1/2</sup>

### SIDE ENTRY

BCHS-G-0200	78	31 <sup>1/2</sup>	20
BCHS-G-0400 + 0600	82	31 <sup>1/2</sup>	20
BCHS-G-0800	90	31 <sup>1/2</sup>	20
BCHS-G-1200 + 1600	90	31 <sup>1/2</sup>	20

### CABLE CLAMP KIT

BCHCA-0200			
BCHCA-0400			
BCHCA-0600			
BCHCA-0800			
BCHCA-1200			

### ADDITIONAL ITEMS

PAD-G-4824	4"/225 amp/4wire
PAD-G-4844	4"/400 amp/4wire
PAD-G-4864	4"/600 amp/4 wire
CT-G-301608	single phase less than 400 amps
CT-G-421816	single phase 400 amps and over 3 phase up to 600 amps
CT-G-423624	601 - 1000 amp

\*Standard recommended boxes: Top, Rear, and Side Entry Pull Boxes. To be used in addition to the BCHL-G-200, 400, 600, 800 and 1200 amp.